

MAKING A

# DIFFERENCE

BY INVESTING IN IMPACT DRIVEN  
SOCIAL ENTERPRISES

Photo: Features Dangerous Dads.  
Courtesy of Graham Morgan Photography

resonance



Delivered by





# INTRODUCTION

Welcome to the second social impact report for the Resonance Health and Wellbeing Challenge Fund (South West). We are delighted to share the impact of our ever-increasing number of social enterprise investees, based on the outcomes they reported to us in March 2019.

What a year it has been since the last report! We are now showcasing twenty-four enterprises that have had investment since the Fund's launch in July 2016 through to July 2019. A few have been highlighted so you can see their impact in more detail, but every single investee has a story to tell, so please take a moment to read more about them.

The Fund has been made possible thanks to backing by Big Society Capital, The National Lottery Communities Fund (delivered by Access Foundation), and the South West Academic Health Science Network.



Photo: Courtesy of Newquay Orchard





## ABOUT THE FUND

The Fund has over £2.2 million of its £3.5 million commitments now invested into a range of social enterprises working under the broad banner of Health and Wellbeing in the South West.

The aim of the Fund is to support those social enterprises that are addressing key issues in society, to scale up their impact through both standard and more innovative forms of finance. We continue to make use of the Launchpad Loans and Permanent Capital products developed in 2018, and to feed our learning from these into the wider social investment space. We also have three market development initiatives underway, with collaborations of social enterprises working in food, tech and care, emerging and looking to start trading by mid 2020.

The Fund works hard to enable these fabulous enterprises to reach the places they want to be. It also shares appropriately the experiences of investees and the Fund in order to engage and inspire others around the UK. The intention being to innovate, connect with others, and to play a fundamental role in their communities health, social care and wellbeing.

Photo: Courtesy of Ark



# SOCIAL IMPACT

APRIL 2018 TO MARCH 2019

20  
NEW  
INVESTMENTS

"We are delighted to have been successful in gaining investment from the Fund. It means we can increase our impact and most importantly, that many more people living with dementia will have access to evidence based cognitive therapy."

Kate Smith  
Memory Matters

## ENGAGEMENTS

7

Different Groups  
Supported By  
Investees

Learning Disability  
Long-Term Unemployment  
Mental Health Needs  
Poverty & Financial Exclusion  
Older People  
Vulnerable Parents  
People Who Have Experienced  
Crime or Abuse

3

Broad  
Categories

Food & Outdoors (8)  
Training & Activities (6)  
Health & Social Care (10)

6023

Numbers  
Reached



Food & Outdoors (3204)  
Training & Activities (1,172)  
Health & Social Care (1,647)

## IMPACT FOR PEOPLE

6023

Total Number of People  
Supported by Social  
Enterprises we have invested  
in

19

Total Numbers of New  
Organizations connected  
to investees

49.5

Number of New Jobs  
Created

"We're hugely grateful for all the support we've received from Resonance. Their investment will enable us to amplify our message and train more people in suicide first aid. This will literally save lives and we are honoured that we are being helped in this way."

Chukumeka Maxwell  
Action to Prevent Suicide

## IMPACT FOR SOCIAL ENTERPRISE

£408,000

Additional Revenue  
Generated  
since investment

7



Organizations have  
improved service

15



Organizations have  
expanded services to new  
geographies and/or  
groups

Photo: Courtesy of  
Cornwall Yoga Centre



# FUND IMPACT

## INVESTMENT

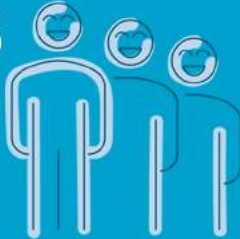
REPORTING  
FROM  
LAUNCH  
TO  
31 JULY 2019

**£2.25M**



**Total Amount Invested**  
So far the Fund has invested £2,255,000 of blended finance into social enterprises in the South West.

**25**



**Number of Social Enterprises**

£2,255,000 invested into 25 social enterprises in a total of 35 transactions.

**Types of Loans**

**27**

Loans

**10**

Launchpad Loans

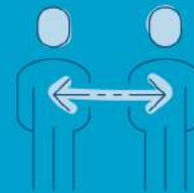
**11**

Permanent Capital Loans



**35+**

Meaningful connections made by Fund managers



**368**

Organizations engaged with the Fund

## GEOGRAPHY

Geographic Spread of Investment

**£1,315,000**

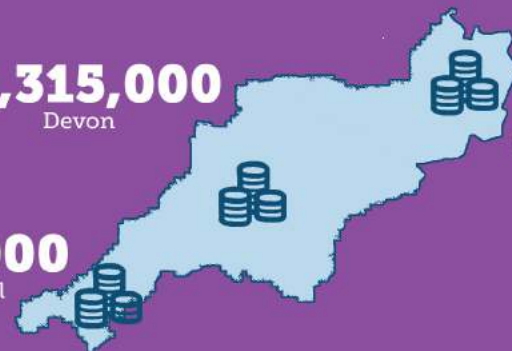
Devon

**£775,000**

Cornwall

**£160,000**

Somerset



## GRANTS

Grant Applications Supported

**23**

Applications

**£273,000**

Accessed

Unlocking



**£850,000**

of Investment

"You guys are doing a great job, without your help small social enterprise (particularly those that operate on a not for profit basis) would not have the opportunity to survive. We plug a vital gap left by years of underfunding and thanks to your support we are making a difference."

**Dartmoor Community Kitchen**

## FEEDBACK 2018/19



**100%**

New Investees would recommend the Fund

**83%**

Overall investee score for supportiveness and accessibility of the Fund for new investees



# PERSONAL ALARM WATCH

AE Partners trading as Personal Alarm Watch, is a tech company aiming to support older people to live fuller lives. It has developed a personal alarm watch that enables older people to make emergency calls anywhere at any time. The goal is to provide peace of mind and allow more people to venture outside and engage fully with their community.

This investment will allow the purchasing of inventory and working capital, as the organization moves from product development into their scale up phase.

**Investment amount:** £80,000  
**Location:** Devon and UK  
**Impact:** Health & Wellbeing, Social Care  
**Groups targeted:** Older People, Families, Professionals

Personal Alarm Watch has reported that they have reached more people across a wider area since investment

## ARK



Ark at Egwood are a land-based day provision for adults and young people, developing social skills, confidence and transferable skills for employment. They also promote social cohesion within the local community by actively encouraging volunteers and engaging with residents who are socially isolated.

The investment allowed upgrade works to the site so the provision could formally launch.

**Investment amount:** £10,000  
**Location:** Somerset  
**Impact:** Education & Learning, Work & Employment, Social Care  
**Groups targeted:** Unemployed, Young People, Long-Term Health Conditions, Older People, Community, Everyone

## MEMORY MATTERS



Memory Matters is an award winning social enterprise, which runs the Moments Café in the heart of Plymouth. Set up and run by two specialist dementia nurses, they work to change the face of dementia support in the community using therapeutic approaches to memory loss and dementia, helping both people living with dementia and carers alike. It provides community based training and engagement sessions.

This investment is to support the development and implementation of a model to allow them to package their current offer so it can be rolled out across the region.

**Investment amount:** £50,000  
**Location:** Devon  
**Impact:** Health, Wellbeing & Social Care.  
**Groups targeted:** Older People, Professionals, Families

## KARREK



Karrek Community CIC is a care agency driven to provide a high quality care service for adults with learning disabilities. It provides a Christian-led service and ethos, having identified this as a need locally, but offers its highly regarded services to all, regardless of religion or background. Karrek has established hubs within communities from which the services are run, reducing travel time for carers and ensuring services stay local.

The investment enables Karrek to build capacity so they can widen their delivery to older vulnerable people.

**Investment amount:** £150,000  
**Location:** Cornwall  
**Impact:** Health & Wellbeing, Education & Learning  
**Groups targeted:** Learning Disability, Older People, Community



# DANGEROUS DADS

Dangerous Dads groups run regular, fun activities for fathers and male carers with children of all ages, both daughters and sons. They also run the world-famous DadFest festivals and are launching the franchised 'Dad Dancing Fit Club' UK wide.

This investment, which followed an earlier Launchpad Loan, will help to grow the Dad Dancing Fit Club franchise and Dad Fests.

---

**Investment amount:** £120,000

**Location:** Devon, Cornwall & Somerset

**Impact:** Health, Wellbeing & Social Care; Education & Learning

**Groups targeted:** Children & Parents; Long-term health conditions

---

Dangerous Dads engaged with 850 people in 2018/19

*"I totally loved teaching Dad Dancing. Children loved interacting with their parents, seeing them dance together and do the secret handshake whilst smiling and giggling made it all worthwhile."* Fitness Instructor



# CARNMELLYN FARM SANCTUARY



Carmmellyn is an outdoor therapy centre near Newquay, which caters for various groups that are seeking interactive sessions with animals, in a peaceful surrounding.

They currently support people with learning disabilities, physical disabilities, autism and those who are home educated. All the animals at the centre are rescued.

This is a launchpad loan to help implement a formal booking system to cope with the demand they are seeing at the moment.

---

**Investment amount:** £10,000

**Location:** Cornwall

**Impact:** Health & Wellbeing, Social Care, Food & Farming

**Groups targeted:** Learning Disabilities, Physical Disabilities, Autism

---

# CORNWALL YOGA CENTRE



Cornwall Yoga Centre specializes in health and wellness.

Their philosophy is that by learning simple techniques, anyone can use yoga practices to improve the quality of their life.

Their investments have been to launch new products targeting workplace

stress and to improve existing services for customers so they will become a wellbeing hub in Truro.

---

**Investment amount:** £50,000

**Location:** Cornwall

**Impact:** Health, Wellbeing & Social Care

**Groups targeted:** Long-Term Health Conditions, Mental Health, Older People, Everyone

---

# SOMERSET LOCAL FOOD



Somerset Local Foods offers an innovative food delivery service, covering large parts of rural Somerset and some urban areas, working with a range of local, organic, and socially conscious food producers.

They have further widened their social impact by offering various job opportunities to people who may have struggled with employment in the past, and it donates surplus to food banks.

The investment will provide working capital to improve operations and enable it to grow its health and wellbeing impact, by reaching out to more people and producers across the rural county.

---

**Investment amount:** £100,000

**Location:** Somerset

**Impact:** Health & Wellbeing, Social Care, Food & Farming

**Groups targeted:** Community, Older People, Unemployed, Rural Isolation

---



# URBAN BIODIVERSITY

Urban Biodiversity CIC uses the Newquay Community Orchard to work with a lot of disadvantaged groups. The orchard is a site providing community interactions, wellbeing activities, skills development and training using horticulture.

The two investments provide working capital as the organization takes on substantial grant funding for a major capital redevelopment of the site.

---

**Investment amount:** £150,000  
**Location:** Cornwall  
**Impact:** Education & Learning, Work & Employment  
**Groups targeted:** Unemployed, Young People, Long-Term Health Conditions, Community, Everyone

---

---

80 participants reported that their mental wellbeing had improved

---

# YMCA PLYMOUTH



Plymouth YMCA offers a range of health and wellbeing focused services for young people and the wider population.

The existing PYMCA gyms have poor accessibility for transport and those who are less mobile so the investment will provide working capital to convert the new city centre space. It will add to the offering, increasing the number of

vulnerable and cardiac patients who can use the service as well as offering affordable facilities to students, nearby residential properties and workers.

---

**Investment amount:** £150,000  
**Location:** Devon  
**Impact:** Health & Wellbeing, Social Care  
**Groups targeted:** Long-Term Health Conditions, Everyone

---

# QUOVITA



Quovita provides a domiciliary care introductory service, bringing together competent, self-employed carers ("Micro providers") with those seeking good care. Because only organizations and not individuals are required to have CQC regulation, Quovita is setting a high, yet sustainable standard in what is currently an unregulated market.

This investment will allow Quovita to expand into new markets and develop an online system that will streamline the organization and enhance the offer to the people receiving care.

---

**Investment amount:** £150,000  
**Location:** Somerset, Devon & Cornwall  
**Impact:** Health & Wellbeing, Social Care  
**Groups targeted:** Older People, Professionals

---

# ACTION TO PREVENT SUICIDE



Action to Prevent Suicide provides training to help people recognize and support those at risk, whilst also raising awareness and breaking the stigma.

The investment will build capacity and enable them to take on further staff and increase their order book, enabling them to draw further investment from the Fund in the future.

---

**Investment amount:** £10,000  
**Location:** Devon  
**Impact:** Health & Wellbeing, Education & Learning, Mental Health  
**Groups targeted:** Community, Everyone

---



# PLYMOUTH LIGHTHOUSE



The Plymouth Lighthouse Project provides supported housing for men with drug and alcohol issues to share in a mutual aid community. The community is abstinence based and focuses on helping its participants establish sustainable lives for when they move on. The first project has been running successfully for nearly three years in Bideford.

This investment is for the refurbishment of a ten-bed property to provide high quality 'homely' accommodation, with experienced support staff.

---

**Investment amount:** £140,000

**Location:** Devon

**Impact:** Housing & Homelessness, Health, Wellbeing & Social Care

**Groups targeted:** Substance Misusers, Long-Term Health Conditions, Professionals

---

# BLUESCREEN IT



Bluescreen IT is a cyber skills and security company, which provides positive pathways for vulnerable young people and adults through training programmes and apprenticeships, to develop skills to work in the cyber industry.

expand their delivery of training to more young people.

---

**Investment amount:** £150,000

**Location:** Devon

**Impact:** Education & Learning, Work & Employment

**Groups targeted:** Vulnerable Children & Adults

---

# SENSE ABILITIES



Sense Abilities provides accessible pop-up Sensory Play, Advocacy, Information, Advice and Guidance for Families & Organizations. They particularly target children with learning disabilities.

To trial a permanent centre which can offer a wider range of multi-sensory activities and a therapy space.

With a wide range of equipment senses can be stimulated including sight, touch, sound and smell.

---

**Investment amount:** £10,000

**Location:** Devon

**Impact:** Health & Wellbeing, Social Care

**Groups targeted:** Learning Disabilities, Professionals, Families

---

# HOLLYWELL HOUSING



Hollywell Housing offers a bespoke housing and tenancy management service for people with learning disabilities and autism who might otherwise not be able to access a sustainable home or manage a tenancy alone.

and their landlords, managing rental payments and offering reassurance to both parties, thereby leading to long-term housing solutions.

By taking on the tenancies through their service they act as an intermediary between these often vulnerable tenants

---

**Investment amount:** £150,000

**Location:** Cornwall & Devon

**Impact:** Health, Wellbeing & Social Care, Housing & Homelessness

**Groups targeted:** People with Learning Disability

---

# NEDCARE



NEDCare was set up to address a market failure due to the lack of care provision in the North East Dartmoor region. This is a community led organization which now provides CQC registered domiciliary care to over eighty people in their homes in this sparsely populated rural area.

NEDCare will be using the investment as working capital to allow them to recruit more care workers. This will enable them to grow their services across the region.

---

**Investment amount:** £150,000

**Location:** Devon

**Impact:** Health, Wellbeing & Social Care

**Groups targeted:** Older People, Community, Professionals

---





## MUSICA

Musica Music and Wellbeing offers academically researched musical sessions to support people with dementia to manage their condition.

The investment is to support with staffing cost as the organization looks to grow their delivery model across the South West region

**Investment amount:** £50,000

**Location:** Devon, Cornwall & Somerset

**Impact:** Health, Wellbeing & Social Care

**Groups targeted:** Older people, People with Learning Disabilities, Long-Term Health Conditions

Reached 1,350 people through music sessions in 2018/19

***"We have found the sessions to be fulfilling in the needs of the residents and a very popular activity amongst the group".***

Care Home Manager

## JUMP WITH JO



Jump with Jo offers active play sessions and spaces targeting under 5's in Cornwall. The aim is to increase childhood activity levels long term, and reduce obesity. They run soft play sessions, dance fun fitness classes for children and soft play kids parties throughout the county.

They also work with schools and nurseries, hosting regular dance and games classes which encourage children to use their imagination and at the same

time further their social skills and co-ordination through physical play.

The investment is to provide working capital to employ more staff and a new centre so they can work with more children.

**Investment amount:** £50,000

**Location:** Cornwall

**Impact:** Health & Wellbeing, Social Care; Education & Learning

**Groups targeted:** Children & Parents; Professionals

## MOOS & BOOS



Moos and Boos work to address the issue of obesity and food poverty in Cornwall, by bringing together services that reach a wide range of people into the same location as healthy food stores and a nutrition focused café.

The launchpad loan went towards the running costs of a café trialling the principle.

**Investment amount:** £10,000

**Location:** Cornwall

**Impact:** Health, Wellbeing & Social Care.

**Groups targeted:** Children, Poverty & Exclusion

## PAR TRACK



Par Track is a green space in the heart of the community known for its athletics track and football pitches. The local community came together and formed a community benefit society to take over the running of the site, gradually creating a health and wellbeing hub including a community café and a green gym.

There is also a NHS centre on site and in partnership with this, they want to use the resource to develop a social prescribing model.

**Investment amount:** £10,000

**Location:** Cornwall

**Impact:** Health & Wellbeing, Poverty & Disadvantage

**Groups targeted:** Community, Everyone



# DARTMOOR COMMUNITY KITCHEN HUB

Eating alone is often a reality for elderly people within our communities, who can end up feeling isolated from the rest of the world. Dartmoor Community Kitchen Hub combats this issue by distributing protein-packed ready meals, targeting the elderly in rural areas.

This investment will allow the organization to refit a property in Bovey Tracey so the enterprise has a kitchen to work from. It will also provide a community space for customers to come and enjoy food outside of their home.

---

**Investment amount:** £145,000  
**Location:** Devon  
**Impact:** Health, Wellbeing & Social Care, Food & Farming  
**Groups targeted:** Older People, Long-Term Health Conditions, Poverty & Exclusion Community, Rural Isolation

---

Dartmoor Community Kitchen Hub has seen a steady growth in sales since investment



# EFFERVESCENT SOCIAL ALCHEMY



Effervescent is an award winning social enterprise with a growing international reputation for developing exceptional campaigns to catalyse social good. They engage children and young people who have faced a range of challenges and train new practitioners in inclusive and socially aware marketing. The result is the creation of high-impact marketing campaigns on difficult issues such as adoption, child sexual abuse and mental health.

The investment will be used to employ some additional key staff as well as to expand the offering from their Plymouth premises to include a creative, co-working community.

---

**Investment amount:** £150,000  
**Location:** Devon  
**Impact:** Health & Wellbeing, Social Care  
**Groups targeted:** Professionals, Poverty & Exclusion, Children & Young People

---

# HEALTH & CARE AT HOME



Health and Care at Home provides private and publicly funded health and care services in the South West, focusing on provision of care for people in their own homes in mid and west Cornwall.

They work with the person themselves, their families and practitioners to ensure that the people they support receive a fully inclusive service and a comprehensive care package that is tailored to their individual needs.

The investment will allow Health & Care at Home to improve their infrastructure, build the team and grow in a controlled, safe way. They aim to be the 'go to' provider of health and care services across the county.

---

**Investment amount:** £75,000  
**Location:** Cornwall  
**Impact:** Health, Wellbeing & Social Care  
**Groups targeted:** Older People, Community

---

# LED BY DREAMS



Led By Dreams offers specialist training and advocacy around domestic violence. They support health care professionals to understand the signs of domestic violence and how to help people escape an abusive relationship. They also provide support to those who need help to rebuild their lives.

This is a launchpad loan to allow Led by Dreams to build capacity in the form of additional staff and equipment to successfully deliver on a recently won commission.

---

**Investment amount:** £10,000  
**Location:** Devon  
**Impact:** Health & Wellbeing, Social Care  
**Groups targeted:** Professionals

---





Photo: Courtesy of Memory Matters



## TO LEARN MORE ABOUT THE FUND CONTACT



**Leila Sharland**  
Investment Manager  
 01566 457373 / 07894 238978  
 leila.sharland@resonance.ltd.uk



**Tom Crook**  
Investment Manager  
 01566 457437 / 07532 397869  
 tom.crook@resonance.ltd.uk

**Launceston**  
The Great Barn  
5 Scarne Court  
Hurdon Road  
Launceston  
PL15 9LR

**Bristol**  
Rivergate House  
70 Redcliff Street  
Bristol  
BS1 6LS

**Manchester**  
3rd Floor  
Eagle Building  
62-68 Cross Street  
Manchester  
M2 4JQ

**London**  
**Impact Hub**  
34b York Way  
Kings Cross  
London  
N1 9AB

**Birmingham**  
**Impact Hub**  
Walker Building  
58 Oxford Street  
Birmingham  
B5 5NR